

Co-op Comments

October 2017

Annual Meeting set for October 7

Soon Rural Electric Cooperative members will gather for the 78th Annual Membership Meeting.

Annual Meeting will be held in REC's Multi Purpose Center in Lindsay on Saturday, October 7, 2017. Registration will begin at 8 a.m. and continue until the beginning of the business meeting at 10 a.m.

The business session will update members on the Co-op's activities from 2016 and both the Board President, Gary Jones, and CEO, Dale Nye, will present financial and operational information.

In addition to the meeting, REC is offering a free health fair provided by the Lindsay Municipal Hospital, South Central Medical Center and the Lindsay Emergency Medical Service. They will begin performing these services from 8 a.m. until the beginning of the business session at 10 a.m. inside the old headquarters building across the highway from the Multi Purpose Center. For the convenience of our members, there are two consent forms for the health fair inside the envelope with the official notice of the meeting. Members can fill out the consent forms and bring the forms with them to annual meeting. Members planning to have the blood test done should refrain from eating after midnight prior to the health fair.

The Lindsay Kiwanis Club will once again be serving their annual pancakes, bacon and coffee fundraiser breakfast to REC members. They will be set up outside the Multi Purpose Center by the tent.

Choctaw Line, a bluegrass band based in the OKC area, will be performing. Key members include Joe Kahlden, Adam Davis, Samuel Grounds, and Rebecca Herrod. These four members met at different festivals and jams, and eventually got their start at the 2015 Guthrie Bluegrass Festival.

Since then, they have played at places around Oklahoma including: the Rodeo Opry, the Rose Rock Festival, the Festival of Freedom, the Oklahoma International Bluegrass Festival, and Rose State College.



Choctaw Line is scheduled to perform again at this year's annual meeting.

Joe Kahlden was in a family bluegrass band starting at the age of 12, and has opened for Ricky Skaggs. Adam Davis has loved bluegrass since his college days, and has placed third in the dobro contest at the Rockygrass Festival. Samuel Grounds has played guitar going on nine years, and recently learned banjo. He attends

the Academy of Contemporary Music in OKC. Rebecca Herrod grew up singing in church and listening to bluegrass from her grandpa and his band. She started out on the guitar and can play the mandolin and the stand-up bass.

A children's program, hosted by Calvary Baptist Church, will run in conjunction with the business session in the back room of the Multi Purpose Center. Look for signs during registration for the children's program. Children ages four to 12 are welcome to attend. 680306

Each member registering will receive registration gifts. This year's gifts include; an REC baseball cap, a deluxe carving set, a magnetic koozie, LED bulbs, a calendar, 2018 Farmers' Almanac and an ink pen.

Prize drawings will be held during and after the business session. Approximately 40 gifts, seventy-five \$75 gift certificates for electricity and three grand prize drawings for \$500 gift certificates for electricity will be given. In addition to the prize drawings, two youth will win a new 18" bike.

Bring the registration card you received in the mail for a quick and simple registration.



Registration gifts include an REC baseball cap, a deluxe carving set and a magnetic koozie.

Our history, our future

Looking back provides the path forward



One of my favorite quotes has always been, "Those who do not remember the past are condemned to repeat it." Yet sometimes remembering our history with the goal of repeating it can actually be a good thing. As the nation's 30,000 cooperatives celebrate National Co-op Month this October, it is a great time to take a look back and a look forward.

Take the history of your electric Co-op. Rural Electric was founded when neighbors worked together to bring electricity to our rural community. Big investor-owned power companies thought they couldn't generate enough profit so they bypassed rural areas. Back then, there were frequent meetings among neighbors to discuss the formation of the Cooperative. Once established, annual meetings were the "must attend" event of the year. The Co-op – on behalf of the member-owners – committed to provide the community with electricity.

Fast forward to today – and tomorrow. Currently, REC serves 11,468 meters. Last year, we returned approximately \$764,000

to our members who were members during 1985.

We understand the spirit which helped create this Co-op must be continually nurtured. While times and technology will continue to change, our commitment to you will not.

Although we started out to provide electricity, our impact (with your support) has grown.

As we continue to look toward the future, you can be confident Rural Electric will commit to explore new ways to help our members and our community.

Our commitment to our members can be seen in every facet of how we conduct business, not just in repairing the electric lines during outages, but in our maintenance program. We continually look to the future and make necessary upgrades and work to maintain our rights-of-way, so we can provide reliable, affordable electricity. Also, we continue to look for new opportunities to better serve you, by offering free energy audits, online account management including: online bill pay, monitor account usage, report an outage and receive notifications about your bill through SmartHub. In addition, we also provide leadership camps, scholarships and programs for the youth in our service territory, as well as an Operation Round-Up program to help those in need throughout our service area.

Over the years, we've listened to you and your fellow co-op member-owners and we know we have to keep pace as technology and consumer tastes evolve. Annual Meeting is one of the ways our members can become involved and learn more about what is happening. Make plans to come to REC's Multi Purpose Center on October 7 starting at 8 a.m. to learn more about the Cooperative and how you, our member-owners can get involved.

As always, we welcome your participation as we plan for the future.

Co-op Comments

Official publication of Rural Electric Cooperative, Inc. CO-OP COMMENTS is owned, controlled and directed by Rural Electric Cooperative, Inc. It is printed monthly and mailed to members in Garvin, McClain, Comanche, Stephens, Grady and Carter counties in Oklahoma.

October 2017

Trustees and Officers

Gary Jones, *President, District 1*
Scott Christian, *Vice-President, District 1*
Brent Bacon, *Secretary/Treasurer, District 1*
Larry Anderson, *District 2*
Johnny Harrel, *District 2*
Terri Hays, *District 2*
Charles Crawford, *District 3*
Mark Finch, *District 3*
Randy Griswold, *District 3*
Dan Williams, *Attorney*

Management and Staff

Dale Nye, *Manager/Chief Executive Officer*
Linda Ray, *Chief Financial Officer*
Kelli Lindsey, *Administrative Assistant and Staff Coordinator*
Elaine Gilreath, *Manager of Customer Service and Data Processing*
Ed Bevers, *Manager of Engineering*
David Crull, *System Superintendent*
Greg Watson, *Operations Superintendent*
Megan Lawrence, *Manager of Member Services and Marketing*
Mitch Gilreath, *Manager of Information Technology Services*
Leonard Coffee, *Manager of Safety and Loss Control/Facilities*

Contact Information

Rural Electric Cooperative, Inc.
Mailing Address
P.O. Box 609
Lindsay, OK 73052

Physical Address
13942 Highway 76
Lindsay, OK 73052

405-756-3104 or 1-800-259-3504
To report an outage call
1-800-259-3504 or 1-855-399-2683
Visit REC at www.recok.coop
and like us on facebook



Knowing the difference between energy demand and purchasing

You may not think you need to have an understanding of energy demand and purchasing, but do you ever look at your energy bill and wonder what it all means? If your answer to that question is “yes,” then you might be interested to learn how demand impacts your utility bill.

To start, it is important to understand how electricity is made and how it is delivered to your home.

Before REC can send electricity to homes, the electricity needs to be generated by a Generation and Transmission cooperative (G&T). REC purchases power from our G&T, Western Farmers Electric Cooperative. Once the electricity has been generated, it travels over high-voltage transmission lines to substations, where the voltage is reduced to a safer level. The electricity then travels over REC's distribution power lines and finds its way into the homes. So, while our members' pay their electric bill to us – your electric distribution cooperative – we don't actually generate the electricity used. That is the job of the G&T.

We do help to determine how much electricity our members need to power their homes and businesses, and our members' play a big part in determining how much electricity the G&T needs to create in order to keep the lights on in our community. This is where the terms “consumption” and “demand” come in.

Consumption is measured in kilowatt hours (kWh). Demand is measured in kilowatts (kW). A lightbulb “consumes” a certain number of watts, let's say 100 watts per hour. If that lightbulb stays on for 10 hours, it “demands” a certain number of kilowatts (in this case, 1 kW) from the generation station producing electricity. Now, if you turn on 10, 100-watt lightbulbs in your home for one hour, you are still consuming the same number of kW.

However, you are placing a demand on the utility to have those kW available to you over the course of one hour, instead of ten. This requires the generation and transmission plant to produce more power in less time in order to meet your demand.

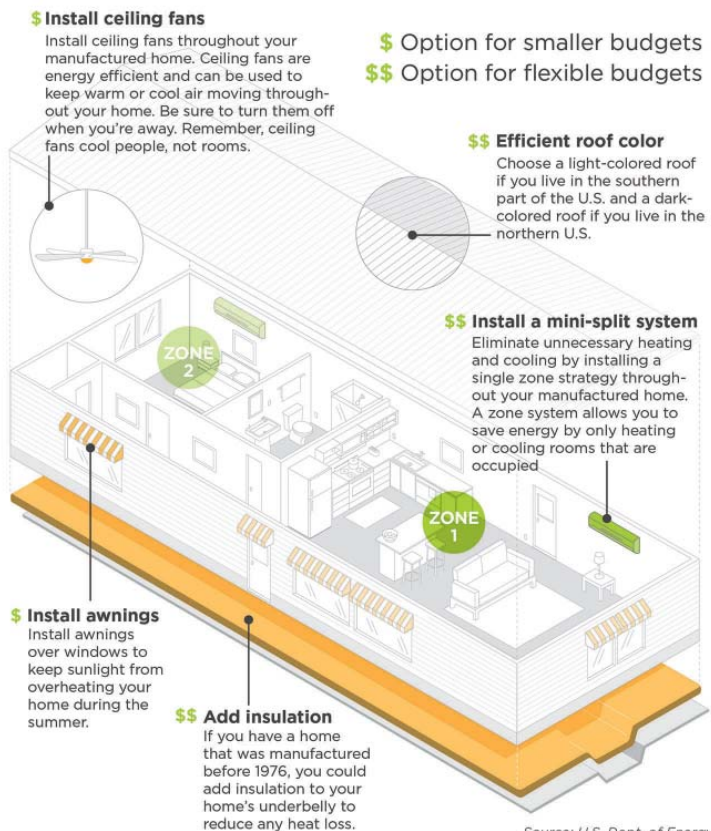
REC purchases kilowatt hours from the G&T based on the average demand of our members. Peak demand refers to the time of day when the demand for electricity is highest. This is typically during the evening when families return home from

work or school, cook dinner and use appliances the most. Using electricity during this peak demand period often costs more to both REC and to our members.

Demand is the reason electricity bills fluctuate season to season and even year to year. Generating and distributing power can be a tricky and complicated business, but rest assured REC will always meet the necessary demand to provide safe, reliable and affordable electricity to our members.

Heating and Cooling Tips for Manufactured Homes

If you own a manufactured home, take measures to ensure you have an efficient heating and cooling system. You can also make simple improvements that save energy and make your home more comfortable.



Classified Advertisement

FARM EQUIPMENT –

FOR SALE: 2014, 6125M JD tractor w/ H340 loader, 8300 JD grain drill, 13' single drill press wheels, excellent fertilizer box. PH: 580-467-4711.

FOR SALE: 5 ½' x 14' flatbed tandem trailer, \$750; Tree pusher for a small dozer, \$600. PH: 405-238-0017.

MISCELLANEOUS –

WANTED: Working refrigerator, reasonably priced. PH: 405-756-6087.

FOR SALE: Used lumber, 2 X 12 X 22' long, good quality, \$15 ea. PH: 405-268-1510.

FOR SALE: GE XL44 propane range with Sharp multi-speed vent microwave for wall mount above. Black over beige color. \$150. PH: 405-331-9808.

FOR SALE: Lift chair, excellent condition,

\$325 firm; Invacare Tracer LT wheel chair, excellent condition, \$325 firm; Honda easy start HR -214 push mower with bagger, needs work, \$50; Ultra Pro, 16-gal shop vac, \$65. PH: 405-351-0878.

REAL ESTATE –

FOR SALE: 2016 Champion mobile home, 16x60, two bedrooms, two full baths, energy efficient windows, fireplace, all appliances, skirting, 2 porches, \$29,500. PH: 580-467-0775.

RECREATIONAL –

FOR SALE: 2011 Keystone Avalanche, 5th-wheel, M-290RL, 34' w/three slides, smoke free, well maintained, luxury interior with all expected features. \$29,800. PH: 405-331-9808.

COMMUNITY ANNOUNCEMENTS –

Oklahoma Roundup Vintage Market is on October 27-28 from 9 a.m. to 6 p.m. on Friday and 9 a.m. to 4 p.m. on Saturday. Oklahoma Roundup Vintage Market is located at 35252 Hwy 29 in Pauls Valley, it is south of Pauls Valley on I-35 and Hwy 29 at exit 66 west and is visible from I-35. Admission is \$3, children under 12 are free. Visit us on facebook at Oklahoma Roundup Vintage Market The Leopard Lasso.

Owl Creek Vintage Market and Junk Sale with multiple vendors in Wayne on October 27 - 28 from 9 a.m. to 4 p.m. Admission is \$3. Owl Creek Vintage Market and Junk is located one mile south of Dollar Store. Visit us on facebook at Owl Creek Vintage Market. PH: 405-314-7854.

Want Ads

are **FREE** to REC members to post noncommercial items. Deadline for ads is the 8th of every month.

Call the Member Services Dept. at 405-756-3104 ext. 238.

Account number worth **\$10** bill credit

Locate your account number in an article of this issue; it will be good for a \$10 credit on your electric bill. To claim the prize, you must locate the account number - if the number is yours, contact REC by the 10th of the month and we will credit your account. Only the member assigned that number is eligible for the prize. If you don't know your account number, it can be located on your electric bill.

Energy Efficiency Tip of the Month

Fall/Winter Energy Tip: When you are asleep or out of the house, turn your thermostat back 10° to 15° for eight hours and save around 10 percent a year on your heating and cooling bills. A programmable thermostat can make it easy to set back your temperature – set it and forget it!

Learn more at www.energy.gov

Visit all the booths during Annual Meeting

- Cast your ballot and vote for your Board of Trustees
- Pick up registration gifts
- Learn more about Western Farmers Electric Cooperative and what it offers REC
- Stop and make sure REC

has the most up-to-date account information to better serve you

- Join Operation Round-Up
- Join ACRE and learn more about what ACRE is doing to better serve you

Local Co-op Connection Card Deals

Backroads Boutique, Lindsay -

5% off everything excluding special order and sale items

Best Western, Chickasha -

15% Off Regular Room Rate

Blue Moose Outdoor

Portable Rentals, Elmore City -

5% Off Septic Tank Pumping, Tent Rental and Special Event Toilet Rentals

Chickasha Diesel Services, Chickasha -

\$50 off any big diesel oil change

Edwards Canvas, Pauls Valley - 5% Off

Jenny's Pics Photography, Lindsay -

10% Off \$50 or More Purchase of Pictures

Lindsay Tire and Lube, Lindsay -

\$5 Off Any Full Service Oil Change;

M & M Furniture, Chickasha -

10% Off Any Purchase

Mazzio's Italian Eatery, Purcell -

10% Off Purchase

Photos by Ginger, Pauls Valley -

1 Free 8x10 Print With First Order (\$25 Minimum)

The Leopard Lasso, Wynnewood -

10% Off Purchase

4 Seat Saddles, Boots and Hats -

10% Off \$100 or More, or 5% Off Repairs

Western Fuel Co., Maysville -

2 Cents Off Per Gallon of Propane on a Minimum of 125 Gallons. Cash Sales Only. (No Other Discounts Allowed)

Pharmacy Discounts -

Check out the discounts available using your Co-op Connections Card at participating pharmacies throughout our area. For a complete list of pharmacies, visit REC's website to see if your pharmacy is offering discounts to Co-op Connections Card holders.